



NJ PATHWAYS

TO CAREER OPPORTUNITIES

Aligning Education to Build an Innovative Workforce

Centers of Workforce Innovation for

Film & TV Production

**Aseptic Processing
& BioManufacturing**

**END OF YEAR
REPORTS**



NJ PATHWAYS
TO CAREER OPPORTUNITIES
Aligning Education to Build an Innovative Workforce

Welcoming Remarks

Catherine Starghill, Esq.

**Vice President and
Chief Workforce
Innovation Officer,
NJCCC**



Agenda

01

Film & TV Production Reports

02

Aseptic Processing & Biomanufacturing Report

03

Q&A

04

Upcoming Events



Our Education Partners

- Atlantic Cape Community College
- Camden County College
- County College of Morris
- Hudson County Community College
- Mercer County Community College
- Brookdale Community College
- Middlesex College
- Raritan Valley Community College
- Rowan College at Burlington County
- Bayshore Middle School
- Cherry Hill East High School
- Cherry Hill Middle Schools
- Cherry Hill West High School
- Galloway Middle School
- Georgian Court University
- Greater Egg Harbor Regional High School District
- Jackson High School
- Keyport High School
- Manchester High School
- Middletown North High School
- Middletown South High School
- Ocean Township High School
- Plainfield High School
- Rutgers University - Camden
- Salvation Army Kroc Center: Camden
- Samuel S Yellin Middle School
- Shore Regional High School
- Somerdale Park Middle School
- Sterling High School
- Stockton University
- Volunteers of America - Delaware Valley
- West Deptford High School
- Woodbury High School



End of Year Report

Center of Workforce Innovation for Film & TV Production

Dave Bruno, Lead Institution Representative

Camden County College

New Jersey Film Academy

Diane Raver,

Brookdale
Community
College

Joan Scocco,

Brookdale
Community
College

New Jersey Film Academy

Education Partners:

Brookdale Community
College

Camden County
College

Hudson County
Community College

Mercer County
Community College

The New Jersey Film Academy (NJFA) is a statewide workforce development initiative designed to meet the surging demand for skilled professionals in New Jersey's rapidly growing film and television industry.

Operating through a partnership model with community colleges across the state, the Academy delivers industry-recognized curriculum to create a qualified workforce pipeline while establishing sustainable revenue streams.

EDUCATION PARTNERS:

- **Brookdale Community College**
- **Camden County College**
- **Hudson County Community College**
- **Mercer County Community College**

- Atlantic Cape Community College
- Essex County College
- Middlesex College
- County College of Morris
- Raritan Valley Community College
- Rowan College of South Jersey
- Sussex County College
- UCNJ Union College of Union County, NJ

- Rutgers University
- Farleigh Dickinson University
- Red Bank Regional High School

New Jersey Film Academy

The New Jersey Film Academy began with four colleges and has now expanded to 12, marking an exciting expansion in regional access and student opportunity. Brookdale Community College has completed three rounds of courses and is running a fourth; Hudson County Community College launched in April, Mercer County Community College and Camden County College are soon to follow. Each college will offer specific courses aligned with the credentialed curriculum tracks, helping to create a flexible, modular training experience for learners.

Strategic Approach

- **Partnership Model:** Brookdale Community College serves as the lead institution, coordinating community college partners statewide to deliver standardized film industry training programs.
- **Curriculum:** Industry-recognized training ensuring students receive education that meets current industry standards and employer needs and is supplied to each college free of charge via the current Pathways
- **funding.**
- **Geographic Reach:** Programs span across New Jersey through strategic partnerships, ensuring accessibility for students statewide while building regional workforce capacity.

EDUCATION PARTNERS:

- **Brookdale Community College**
- **Camden County College**
- **Hudson County Community College**
- **Mercer County Community College**

- Atlantic Cape Community College
- Essex County College
- Middlesex College
- County College of Morris
- Raritan Valley Community College
- Rowan College of South Jersey
- Sussex County College
- UCNJ Union College of Union County, NJ

- Rutgers University
- Farleigh Dickinson University
- Red Bank Regional High School

New Jersey Film Academy

Workforce Development Impact

- **Work-Based Learning:** Students placed in industry work based learning positions, demonstrating direct pathway from education to employment.
- **Industry Integration:** Programs designed with input from entertainment industry professionals, ensuring graduates meet employer needs and industry standards.
- **Economic Development:** Initiative supports New Jersey's goal of becoming a premier destination for film and TV production by ensuring qualified local workforce availability.

Partnership Network

- **Active Partners:** Brookdale Community College (lead), Hudson County Community College, Camden County College, Mercer County Community College
- **Expanding Network:** Atlantic Cape Community College, Essex County College, Middlesex College, County College of Morris, Raritan Valley Community College, Rowan College of South Jersey, UCNJ Union College of Union County, NJ

EDUCATION PARTNERS:

- **Brookdale Community College**
- **Camden County College**
- **Hudson County Community College**
- **Mercer County Community College**

- Atlantic Cape Community College
- Essex County College
- Middlesex College
- County College of Morris
- Raritan Valley Community College
- Rowan College of South Jersey
- Sussex County College
- UCNJ Union College of Union County, NJ

- Rutgers University
- Farleigh Dickinson University
- Red Bank Regional High School

New Jersey Film Academy

Sustainability and Growth

The Academy has established a scalable model that reduces reliance on external funding over time through tuition revenue and industry partnerships. The centralized support structure allows for efficient resource utilization while maintaining program quality across all partner institutions.

The NJ Film Academy represents a successful model of multi-institutional collaboration that addresses critical workforce needs while supporting economic development in New Jersey's entertainment sector.

In Development

- **Instructor support and onboarding processes.**

EDUCATION PARTNERS:

- **Brookdale Community College**
- **Camden County College**
- **Hudson County Community College**
- **Mercer County Community College**

- Atlantic Cape Community College
- Essex County College
- Middlesex College
- County College of Morris
- Raritan Valley Community College
- Rowan College of South Jersey
- Sussex County College
- UCNJ Union College of Union County, NJ

- Rutgers University
- Farleigh Dickinson University
- Red Bank Regional High School

New Jersey Film Academy

Ancillary Activities and Outcomes

The New Jersey Production Guide (njproductionguide.org) serves as both an industry resource and a revenue generator for the Academy. The Guide connects students, alumni, and professionals, local businesses, with film and TV production opportunities statewide.

Words of Advice

Work closely with the nonprofit arm of the Academy to ensure alignment and resource coordination. Support the success and visibility of the New Jersey Production Guide as it will play a vital role in both employment outcomes and financial sustainability.

Esports Production and Content Creation Hubs

David Bruno,

Camden

County

College

Esports Production and Content Creation Hubs

Community College Education Partners:

Camden County College

Brookdale Community College

Rowan College at Burlington County

Established NJ as a national leader in academic and workforce pathways in esports and digital media.

Established two digital media production hubs, increased statewide participation and collaboration, expanded coursework, and stackable credentials to bridge academic instruction with real-world esports content creation and broadcasting.

EDUCATION PARTNERS:

- Bayshore Middle School
- Cherry Hill East High School
- Cherry Hill Middle Schools
- Cherry Hill West High School
- Galloway Middle School
- Georgian Court University
- Greater Egg Harbor Regional High School District
- Jackson High School
- Keyport High School
- Manchester High School
- Middletown North High School
- Middletown South High School
- Ocean Township High School
- Plainfield High School
- Rutgers University - Camden
- Salvation Army Kroc Center: Camden
- Samuel S Yellin Middle School
- Shore Regional High School
- Somerdale Park Middle School
- Sterling High School
- Stockton University
- Volunteers of America - Delaware Valley
- West Deptford High School
- Woodbury High School

Esports Production and Content Creation Hubs

Experiential Learning & Workshops: 200+ students and staff from 20+ K-12 schools participated in hands-on workshops on Adobe Premiere, After Effects, Illustrator, Photoshop, DaVinci Resolve. Targeted adult workshops introduced technical and communication skills; K-12 students actively contributed to live esports productions, including Garden State Esports Winter and Spring Finals, with thousands in attendance.

Production Hubs & Certifications: Fully functioning esports hubs produced live and pre-recorded content for K-12 and collegiate leagues, creating internship opportunities with Garden State Esports and Horizon AVL.

EDUCATION PARTNERS:

- Bayshore Middle School
- Cherry Hill East High School
- Cherry Hill Middle Schools
- Cherry Hill West High School
- Galloway Middle School
- Georgian Court University
- Greater Egg Harbor Regional High School District
- Jackson High School
- Keyport High School
- Manchester High School
- Middletown North High School
- Middletown South High School
- Ocean Township High School
- Plainfield High School
- Rutgers University - Camden
- Salvation Army Kroc Center: Camden
- Samuel S Yellin Middle School
- Shore Regional High School
- Somerdale Park Middle School
- Sterling High School
- Stockton University
- Volunteers of America - Delaware Valley
- West Deptford High School
- Woodbury High School

Esports Production and Content Creation Hubs

Pathway Alignment & Articulation: Dual enrollment agreements expanded with Willingboro High School; new articulation agreements established with Neumann and Rowan Universities; collaborations with Georgian Court University, Brookdale, and RCBC strengthened academic pathways into high-demand digital media and esports careers.

Adult Learner & Community Engagement: partnerships with Hopeworks, the Kroc Center, and veterans' organizations supported workforce readiness and civic engagement.

Impact & Scalability: Integration of certifications, dual enrollment and articulation, experiential hubs, adult learner pathways, and statewide promotion positioned New Jersey as a national leader in esports and digital media education, preparing hundreds of students for careers in digital content creation, production, and broadcasting.

PATHWAY CONNECTIONS:

Connection to High School (Non-Credit)

Connection to High School (Dual Enrollment)

Community College (Non Credit)

Community College (Credit)

Apprenticeship Development

PLA for Apprenticeship RTI

PLA

Connection between Community Colleges (1+1)

Experiential Learning

Connection to CBOs

Adult Learners

Adult Literacy

Connection to 4-Yr College/University

Professional Development

Pilot

Esports Production and Content Creation Hubs

Camden County College focused on creating dual enrollment entry points for high school students interested in esports-related courses. Partnership discussions with Willingboro High School and Atlantic City Public Schools advanced efforts to align curricula with the ESP A.A.S. degree program. Planning sessions supported course alignment and early exposure to content creation, broadcasting, and digital media production. These pathways are designed to give students hands-on experiences that prepare them for college and future careers in esports.

Pathway Connection Resources:

- **Syllabi**
- **Materials**

PATHWAY CONNECTIONS:

Connection to High School (Non-Credit)

Connection to High School (Dual Enrollment)

Community College (Non Credit)

Community College (Credit)

Apprenticeship Development

PLA for Apprenticeship RTI

PLA

Connection between Community Colleges (1+1)

Experiential Learning

Connection to CBOs

Adult Learners

Adult Literacy

Connection to 4-Yr College/University

Professional Development

Pilot

Esports Production and Content Creation Hubs

Camden County College created non-credit coursework to embed industry-recognized certifications: Adobe Premiere, After Effects, Illustrator, Photoshop, and DaVinci Resolve. These certifications align directly with workforce needs in esports production, streaming, and post production, ensuring students gain marketable, industry-standard skills. This curriculum also complements the coursework through the NJ Film Academy, creating cross-program synergy and stackable credentials that prepare students for careers across esports, film, and digital media production.

Pathway Connection Resources:

Curriculum (Non Credit)

Course Materials

PATHWAY CONNECTIONS:

Connection to High School (Non-Credit)

Connection to High School (Dual Enrollment)

Community College (Non Credit)

Community College (Credit)

Apprenticeship Development

PLA for Apprenticeship RTI

PLA

Connection between Community Colleges (1+1)

Experiential Learning

Connection to CBOs

Adult Learners

Adult Literacy

Connection to 4-Yr College/University

Professional Development

Pilot

Esports Production and Content Creation Hubs

Camden County College updated esports-related credit courses for Spring 2025 to integrate certification preparation in Adobe Creative Cloud applications and DaVinci Resolve. Faculty collaborated to revise curriculum and Student Learning Outcomes, ensuring students gain both academic credit and the competencies needed for certification success. Planning also began to embed this into future coursework at Brookdale Community College, expanding training in virtual production, game development, and immersive media. These updates strengthen the ESP A.A.S. program as a cutting-edge pathway connecting gaming, media, and technology careers.

PATHWAY CONNECTIONS:

Connection to High School (Non-Credit)

Connection to High School (Dual Enrollment)

Community College (Non Credit)

Community College (Credit)

Apprenticeship Development

PLA for Apprenticeship RTI

PLA

Connection between Community Colleges (1+1)

Experiential Learning

Connection to CBOs

Adult Learners

Adult Literacy

Connection to 4-Yr College/University

Professional Development

Pilot

Esports Production and Content Creation Hubs

Rowan College at Burlington County (RCBC) engaged a consultant to assess and report on the development and sustainability of the program. Subsequently, six Esports courses along with an Associate of Applied Science (AAS) degree in Esports were developed, both of which were approved by the RCBC curriculum committee and Board. Additionally, they have completed the Standards for New Academic Degree Programs in Esports and submitted them to the AIC, awaiting approval. Program anticipated start: Spring 2026.

Pathway Connection Resources:

Curriculum (Credit)

Course Materials

PATHWAY CONNECTIONS:

Connection to High School (Non-Credit)

Connection to High School (Dual Enrollment)

Community College (Non Credit)

Community College (Credit)

Apprenticeship Development

PLA for Apprenticeship RTI

PLA

Connection between Community Colleges (1+1)

Experiential Learning

Connection to CBOs

Adult Learners

Adult Literacy

Connection to 4-Yr College/University

Professional Development

Pilot

Esports Production and Content Creation Hubs

Camden County College and Brookdale Community College advanced pathway alignment and articulation efforts to support seamless transfer and stackable credentials in esports production and content creation. Brookdale developed new coursework in streaming, content creation, and digital media aligned with Camden's ESP A.A.S. framework, creating a foundation for future 2+2 agreements with four-year institutions. The two colleges also collaborated closely to coordinate curricula, shared industry insights, and jointly planned workshops and student experiences. These efforts are building scalable statewide pathways that position New Jersey's community colleges as leaders in preparing students for careers in digital content and esports production.

Pathway Connection Resources:

Curriculum (Credit)

Course Materials

PATHWAY CONNECTIONS:

Connection to High School (Non-Credit)

Connection to High School (Dual Enrollment)

Community College (Non Credit)

Community College (Credit)

Apprenticeship Development

PLA for Apprenticeship RTI

PLA

Connection between Community Colleges (1+1)

Experiential Learning

Connection to CBOs

Adult Learners

Adult Literacy

Connection to 4-Yr College/University

Professional Development

Pilot

Esports Production and Content Creation Hubs

Camden County College and Brookdale Community College expanded experiential learning through a series of hands-on workshops that engaged nearly 200 students in industry-standard platforms including Adobe Creative Cloud and DaVinci Resolve. Students gained direct experience in livestream production, video editing, motion graphics, and virtual environments by completing guided projects and simulations with professional-grade tools. The workshop series also included sessions on leadership, professionalism, and career pathways. These efforts culminated in a live esports event where students served in professional production roles such as livestream switching, graphics operation, and broadcast coordination. Together, the workshops and live event provided students with critical technical skills, teamwork experience, and confidence to pursue careers in esports production, digital media, and broadcasting.

Pathway Connection Resources:

Workshop Content and Materials – applicable for K12 and higher education

PATHWAY CONNECTIONS:

Connection to High School (Non-Credit)

Connection to High School (Dual Enrollment)

Community College (Non Credit)

Community College (Credit)

Apprenticeship Development

PLA for Apprenticeship RTI

PLA

Connection between Community Colleges (1+1)

Experiential Learning

Connection to CBOs

Adult Learners

Adult Literacy

Connection to 4-Yr College/University

Professional Development

Pilot

Esports Production and Content Creation Hubs

The Esports Production & Content Creation Hubs project expanded pathways for returning adult learners, providing flexible opportunities to gain skills and credentials in esports and digital media. A series of three targeted workshops engaged participants in industry exploration, live production, and shoutcasting, offering hands-on experience with streaming tools, audiovisual equipment, and live commentary. The workshops connected learners' gaming experience to real-world careers across esports, broadcasting, digital marketing, and event production. Additional events, including Gaming Careers Night at Hopeworks and participation in the HOPE Summit at Campbell's Soup, provided networking opportunities with industry professionals and employers. These initiatives equip adult learners with practical skills, industry exposure, and credentials that support workforce readiness and career advancement in the growing esports and digital media sectors.

Pathway Connection Resources:

Workshop Content and Materials – applicable for non-academic audiences

PATHWAY CONNECTIONS:

Connection to High School (Non-Credit)

Connection to High School (Dual Enrollment)

Community College (Non Credit)

Community College (Credit)

Apprenticeship Development

PLA for Apprenticeship RTI

PLA

Connection between Community Colleges (1+1)

Experiential Learning

Connection to CBOs

Adult Learners

Adult Literacy

**Connection to 4-Yr
College/University**

Professional Development

Pilot

Esports Production and Content Creation Hubs

Camden County College updated their articulation agreement with Stockton University, established new articulation agreements with Neumann University and Rowan University, and collaborated with Rutgers University-Camden and Georgian Court University to explore esports articulation agreements and transfer pathways. Students participated in campus visits, explored new esports coursework, and gained insight into credential attainment and career opportunities in digital media and esports production.

PATHWAY CONNECTIONS:

Connection to High School (Non-Credit)

Connection to High School (Dual Enrollment)

Community College (Non Credit)

Community College (Credit)

Apprenticeship Development

PLA for Apprenticeship RTI

PLA

Connection between Community Colleges (1+1)

Experiential Learning

Connection to CBOs

Adult Learners

Adult Literacy

**Connection to 4-Yr
College/University**

Professional Development

Pilot

Esports Production and Content Creation Hubs

The Garden State Esports Collegiate Circuit (GSECC) grew from 4 to 22 participating colleges, engaging hundreds of students in competitive play while providing hands-on leadership, teamwork, and production experience. Students at Camden and Brookdale, alongside K-12 partner students, co-produced and live-streamed GSECC events using Adobe Creative Cloud and DaVinci Resolve, using skills in video editing, motion graphics, live broadcast switching, and audio mixing. These experiences integrate technical proficiency, creative storytelling, and event management, preparing students for careers in esports, broadcasting, and digital media while contributing professional-quality productions to the collegiate esports community.

Pathway Connection Resources:

Articulation Agreements and related course Materials

PATHWAY CONNECTIONS:

Connection to High School (Non-Credit)

Connection to High School (Dual Enrollment)

Community College (Non Credit)

Community College (Credit)

Apprenticeship Development

PLA for Apprenticeship RTI

PLA

Connection between Community Colleges (1+1)

Experiential Learning

Connection to CBOs

Adult Learners

Adult Literacy

Connection to 4-Yr College/University

Professional Development

Pilot

Esports Production and Content Creation Hubs

In December 2024, Camden County College, in partnership with the Esports Trade Association, hosted the Shiver Showdown, bringing together over 60 education, industry, nonprofit, and government stakeholders to showcase student-led esports production. Students executed a professional-level broadcast, managing live streaming, camera operation, commentary, sound mixing, and post-event editing using Adobe Creative Cloud and DaVinci Resolve and advanced live-streaming broadcasting tools. The event demonstrated the program's success in providing real-world, skill-based training aligned with industry standards, while fostering discussions on partnerships, internships, and workforce pathways in esports.

Community engagement continued in 2025 through hands-on workshops at the Camden County Teen Arts Festival, Career Day presentations at local high schools, and counselor outreach events, sparking interest and raising awareness of esports production and digital media career opportunities.

Pathway Connection Resources:

Workshop Content and Materials – Applicable for all audiences

EDUCATION PARTNERS:

- Bayshore Middle School
- Cherry Hill East High School
- Cherry Hill Middle Schools
- Cherry Hill West High School
- Galloway Middle School
- Georgian Court University
- Greater Egg Harbor Regional High School District
- Jackson High School
- Keyport High School
- Manchester High School
- Middletown North High School
- Middletown South High School
- Ocean Township High School
- Plainfield High School
- Rutgers University - Camden
- Salvation Army Kroc Center: Camden
- Samuel S Yellin Middle School
- Shore Regional High School
- Somerdale Park Middle School
- Sterling High School
- Stockton University
- Volunteers of America - Delaware Valley
- West Deptford High School
- Woodbury High School

Esports Production and Content Creation Hubs

Ancillary Activities or Outcomes

Professional Workforce Credentials: Clear need for Unreal Engine Broadcast certification. Developed the nation's first Esports Tournament Organization and Referee Certification, creating formal training and paid opportunities for students in esports operations.

Expanded Community Engagement: Hosted unplanned workshops and events for K-12 students, adult learners, and local communities, including the Camden County Teen Arts Festival, Career Days, and veteran-focused initiatives.

Conference participation inspired other K12 and organizations to participate.

Statewide Visibility & Leadership: Shiver Showdown and other public productions showcased student talent and positioned Camden County College as a leader in esports workforce education.

Cross-Program Synergy: Complementary coursework to NJ Film Academy programming and collaboration across community colleges and four-year institutions fostered stackable credentials and interdisciplinary learning in esports and digital media.

EDUCATION PARTNERS:

- Bayshore Middle School
- Cherry Hill East High School
- Cherry Hill Middle Schools
- Cherry Hill West High School
- Galloway Middle School
- Georgian Court University
- Greater Egg Harbor Regional High School District
- Jackson High School
- Keyport High School
- Manchester High School
- Middletown North High School
- Middletown South High School
- Ocean Township High School
- Plainfield High School
- Rutgers University - Camden
- Salvation Army Kroc Center: Camden
- Samuel S Yellin Middle School
- Shore Regional High School
- Somerdale Park Middle School
- Sterling High School
- Stockton University
- Volunteers of America - Delaware Valley
- West Deptford High School
- Woodbury High School

Esports Production and Content Creation Hubs

Words of Advice

Prioritize Hands-On Learning: Students gain the most from immersive, project-based experiences that mirror professional industry environments.

Build Strong Partnerships: Collaboration between K-12, community colleges, four-year institutions, and industry partners ensures scalable and sustainable pathways.

Embed Industry Standards Early: Certifications and professional tools (Adobe Suite, DaVinci Resolve, Unreal Engine) enhance employability and bridge education to workforce needs.

Awareness is Crucial: Many K12 districts, higher eds and community organizations wanted to participate after learning about project.



End of Year Report

Center of Workforce Aseptic Processing & Biomanufacturing

Conrad Mercurius, Lead Institution Representative

Raritan Valley Community College

NJBioFutures



**Jennifer Kaklamanis
and Ryan Stewart,**
Mercer County
Community College

Joanie Coffaro,
Middlesex College

Conrad Mercurius,
Raritan Valley
Community College

NJBioFutures

Education Partners:

Raritan Valley Community
College

Middlesex College

Mercer County
Community College

NJBioFutures is New Jersey's strategic, multi-institutional workforce initiative designed to meet the growing demand for a highly skilled life sciences and biomanufacturing workforce, with a focus on cell and gene therapy and aseptic biomanufacturing. Led by Raritan Valley Community College (RVCC) in partnership with Middlesex College (MC) and Mercer County Community College (MCCC), and operating as a Center of Workforce Innovation for Aseptic Processing & Biomanufacturing under the NJ Pathways to Career Opportunities initiative, NJBioFutures builds a sustainable, employer-driven talent pipeline by providing industry-relevant, hands-on training, creating equitable access to high-paying careers for students, adult learners, and incumbent workers, and supporting innovation, equity, and inclusion in the life sciences workforce.

PATHWAY CONNECTIONS:

Connection to High School (Non-Credit)

Connection to High School (Dual Enrollment)

Community College (Non Credit)

Community College (Credit)

Apprenticeship Development

PLA for Apprenticeship RTI

PLA

Connection between Community Colleges (1+1)

Experiential Learning

Connection to CBOs

Adult Learners

Adult Literacy

Connection to 4-Yr College/University

Professional Development

Pilot

NJBioFutures

Through NJBioFutures, the three partner colleges have collectively established high school engagement activities to build awareness and pathways in biotechnology and aseptic processing. Together, partners deliver awareness sessions, hands-on demonstrations, and industry site visits, while also creating opportunities for students to explore career pathways in cell and gene therapy and related fields. Each college has piloted programs with local high schools—such as boot camps, curriculum-based engagement, and partnerships with administrators and CTE programs—to strengthen recruitment pipelines and provide eligibility for future certificate training and internships. These efforts continue to expand regionally, ensuring greater student participation and preparation for the life sciences workforce.

Pathway Connection Resources:

- [MOU RVCC BBHS](#)

PATHWAY CONNECTIONS:

Connection to High School (Non-Credit)

Connection to High School (Dual Enrollment)

Community College (Non Credit)

Community College (Credit)

Apprenticeship Development

PLA for Apprenticeship RTI

PLA

Connection between Community Colleges (1+1)

Experiential Learning

Connection to CBOs

Adult Learners

Adult Literacy

Connection to 4-Yr College/University

Professional Development

Pilot

NJBioFutures

Non-credit training programs in GMP Professional and Pharmaceutical Aseptic Cleaning have been developed and delivered. Curriculum, instructional materials, and assessment tools have been finalized (for GMP) and partially finalized (for Aseptic Cleaning) and are in use. Programs are aligned with employer skill needs, include experiential components, and provide a direct bridge to employment or advanced training.

Specifically, the GMP Professional Certificate course was refined and the Pharmaceutical Aseptic Cleaning Certificate course will be refined in collaboration with experienced training coordinators from Johnson & Johnson. The three partner colleges are considering options for development of the third program --- Aseptic Biomanufacturing Certificate --- to ensure full alignment with industry standards.

PATHWAY CONNECTIONS:

Connection to High School (Non-Credit)

Connection to High School (Dual Enrollment)

Community College (Non Credit)

Community College (Credit)

Apprenticeship Development

PLA for Apprenticeship RTI

PLA

Connection between Community Colleges (1+1)

Experiential Learning

Connection to CBOs

Adult Learners

Adult Literacy

Connection to 4-Yr College/University

Professional Development

Pilot

NJBioFutures

RVCC: Led development of the GMP Professional and Pharmaceutical Aseptic Cleaning Certificate courses and tested with different audiences.

MC: The college is in the process of hiring a Director of Aseptic Manufacturing to oversee the implementation of the program. Middlesex will offer the GMP Professional and Pharmaceutical Aseptic Cleaning Certificate programs in Spring 2026.

MCCC: Mercer County Community College recently hired a Project Manager for Aseptic Biomanufacturing and will offer the GMP Professional and Pharmaceutical Aseptic Cleaning Certificate programs Fall 2025 and Aseptic Biomanufacturing Certificate program when curriculum is available.

All three partner colleges have instructors who have been trained by Johnson & Johnson.

PATHWAY CONNECTIONS:

Connection to High School (Non-Credit)

Connection to High School (Dual Enrollment)

Community College (Non Credit)

Community College (Credit)

Apprenticeship Development

PLA for Apprenticeship RTI

PLA

Connection between Community Colleges (1+1)

Experiential Learning

Connection to CBOs

Adult Learners

Adult Literacy

Connection to 4-Yr College/University

Professional Development

Pilot

NJBioFutures

MC: Middlesex created a Biotechnology Associate of Science degree in the first year of the NJ Pathways to Career Opportunities initiative. Staff and faculty are working to determine a pathway from the non-credit certificates to credit, possibly through an Associate of Applied Science degree.

RVCC: Advancing the development of a Biotechnology degree aligned with Middlesex College's degree program.

MCCC: The Dean of Science has been attending curriculum meetings in preparation of developing a Biotechnology degree.

Pathway Connection Resources:

<https://middlesexcollege.edu/academics/science-mathematics/biotechnology-science-transfer/>

PATHWAY CONNECTIONS:

Connection to High School (Non-Credit)

Connection to High School (Dual Enrollment)

Community College (Non Credit)

Community College (Credit)

Apprenticeship Development

PLA for Apprenticeship RTI

PLA

Connection between Community Colleges (1+1)

Experiential Learning

Connection to CBOs

Adult Learners

Adult Literacy

Connection to 4-Yr College/University

Professional Development

Pilot

NJBioFutures

The NJ BioExperience project, a collaboration among RVCC, MC, and MCCC, brought students from all three colleges together to explore cell and gene therapy and related career paths, including visits to four industry partner facilities.

Students toured state-of-the-art pharmaceutical facilities, participated in career panels with industry professionals, and gained firsthand insight into what it's like to work in the biopharma field—including the exciting growth opportunities ahead.

Pathway Connection Resources:

[NJBioExperience_latestRev01](#)



PATHWAY CONNECTIONS:

Connection to High School (Non-Credit)

Connection to High School (Dual Enrollment)

Community College (Non Credit)

Community College (Credit)

Apprenticeship Development

PLA for Apprenticeship RTI

PLA

Connection between Community Colleges (1+1)

Experiential Learning

Connection to CBOs/WDBs

Adult Learners

Adult Literacy

Connection to 4-Yr College/University

Professional Development

Pilot

NJBioFutures

Partnerships with Workforce Development Boards have been established to, among other things, recruit diverse learners, including those from underserved communities. Scholarship opportunities are being provided to ensure accessibility and support workforce entry for all participants. Other local partnerships are actively engaged to promote the program and connect prospective learners with these opportunities.

PATHWAY CONNECTIONS:

Connection to High School (Non-Credit)

Connection to High School (Dual Enrollment)

Community College (Non Credit)

Community College (Credit)

Apprenticeship Development

PLA for Apprenticeship RTI

PLA

Connection between Community Colleges (1+1)

Experiential Learning

Connection to CBOs

Adult Learners

Adult Literacy

Connection to 4-Yr College/University

Professional Development

Pilot

NJBioFutures

Targeted programs for adult learners, including incumbent worker upskilling and career changers, are fully operational. Training focuses on skill gaps identified by employers and provides clear pathways into entry level and mid-skill positions in biomanufacturing.

RVCC: Delivered training for multiple cohort groups, including upskilling, re-skilling, and new-skilling initiatives aligned with employer-identified needs.

MC: In other programs, Middlesex provides training in a variety of areas to the adult population to either upskill or learn a new skill. The same principle would be applied to this program.

MCCC: Will deliver training for multiple cohort groups this Fall, including upskilling, re-skilling, and new-skilling initiatives aligned with employer-identified needs.

PATHWAY CONNECTIONS:

Connection to High School (Non-Credit)

Connection to High School (Dual Enrollment)

Community College (Non Credit)

Community College (Credit)

Apprenticeship Development

PLA for Apprenticeship RTI

PLA

Connection between Community Colleges (1+1)

Experiential Learning

Connection to CBOs

Adult Learners

Adult Literacy

Connection to 4-Yr College/University

Professional Development

Pilot

NJBioFutures

As part of our partnership with Johnson & Johnson, they have generously agreed to lead our one-week course on Good Manufacturing Practices (GMP). The first session was fully enrolled with 23 participants, a diverse group of high school students, recent graduates, adult learners exploring new career paths, and incumbent industry workers.

All current instructors also participated in the course as part of a Train-the-Trainer initiative. Throughout the week, students were highly engaged in interactive activities and games designed to teach FDA and pharmaceutical regulations and guidelines.

Following this training, our instructors are now fully equipped to deliver the course using Johnson & Johnson's model. We'll be hosting a "teach-back" session, during which each instructor will present a portion of the course to J&J trainers for feedback and refinement.

PATHWAY CONNECTIONS:

Connection to High School (Non-Credit)

Connection to High School (Dual Enrollment)

Community College (Non Credit)

Community College (Credit)

Apprenticeship Development

PLA for Apprenticeship RTI

PLA

Connection between Community Colleges (1+1)

Experiential Learning

Connection to CBOs

Adult Learners

Adult Literacy

Connection to 4-Yr College/University

Professional Development

Pilot

NJBioFutures

A train-the-trainer program led by industry partners has been delivered to faculty and lab technicians. Ongoing professional development ensures instructors remain current on evolving GMP standards, equipment, and industry practices.

Raritan Valley Community College, Middlesex College, and Mercer County Community College are all actively engaging with industry to ensure high-quality, standardized training for their instructors. RVCC has entered into an agreement with Johnson & Johnson to provide experienced training coordinators who guide faculty and non-credit instructors through standard processes and industry best practices, emphasizing both technical proficiency and adherence to GMP compliance. Similarly, Middlesex College instructors will participate in a train-the-trainer program for any new instructors joining the program, ensuring consistent instructional quality. Mercer County Community College is also implementing parallel industry-aligned training initiatives to equip instructors with the skills and knowledge needed to deliver programs that meet current standards and best practices.



EDUCATION PARTNERS:

Raritan Valley
Community College

Middlesex College

Mercer County
College

NJBioFutures

Ancillary Activities or Outcomes:

To date, NJBioFutures has hosted two curriculum workshops in collaboration with industry partners to gather valuable feedback and enhance our course offerings.

In September, RVCC hosted their official ribbon-cutting ceremony, welcoming industry leaders, government officials, and potential investors to celebrate the launch of their innovative workforce programs including NJBioFutures. Partner colleges will host similar ceremonies for their lab facilities, Mercer on October 16 and Middlesex later this Fall.

NJBioFutures partner colleges attended several industry related conferences including the BioNJ Annual Manufacturing Briefing for which all three partner colleges participated in a panel discussion regarding their experiences and offerings.





Q&A

Centers of Workforce Innovation for Film & TV Production and Aseptic Processing & BioManufacturing

Closing Remarks

Catherine Starghill, Esq.

**Vice President and
Chief Workforce
Innovation Officer,
NJCCC**



Upcoming Events



**Initiative
Materials**
[Learn More](#)



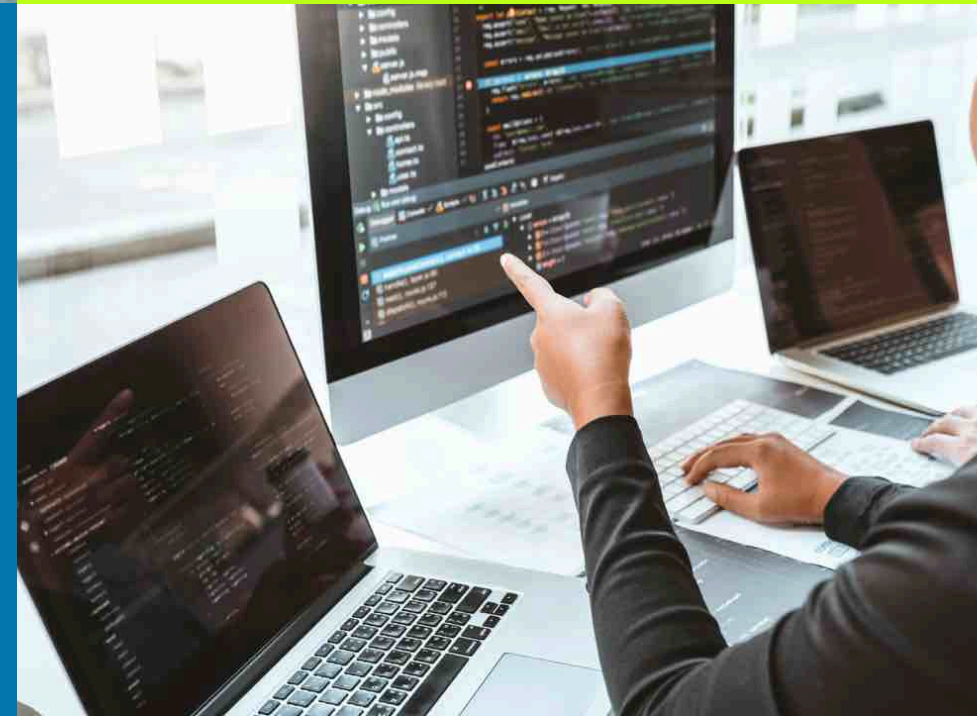
NJPathways.org



**End Of Year
Reports**
[Learn More](#)



**NJ Pathways
Repository**
[Learn More](#)





NJ PATHWAYS
TO CAREER OPPORTUNITIES
Aligning Education to Build an Innovative Workforce